



Scan for more information

PA-04-HS
User Manual

Table of Contents

Specifications.....	3
Dimensions.....	4
Speed/Current vs Load.....	5
Connectors & Feedback.....	6
Mounting Ends.....	7
Mounting Brackets.....	8
Internal Components.....	9
Internal Descriptions.....	10

Have any queries? Our expert engineers are here to help!



sales@progressiveautomations.com



1-800-676-6123



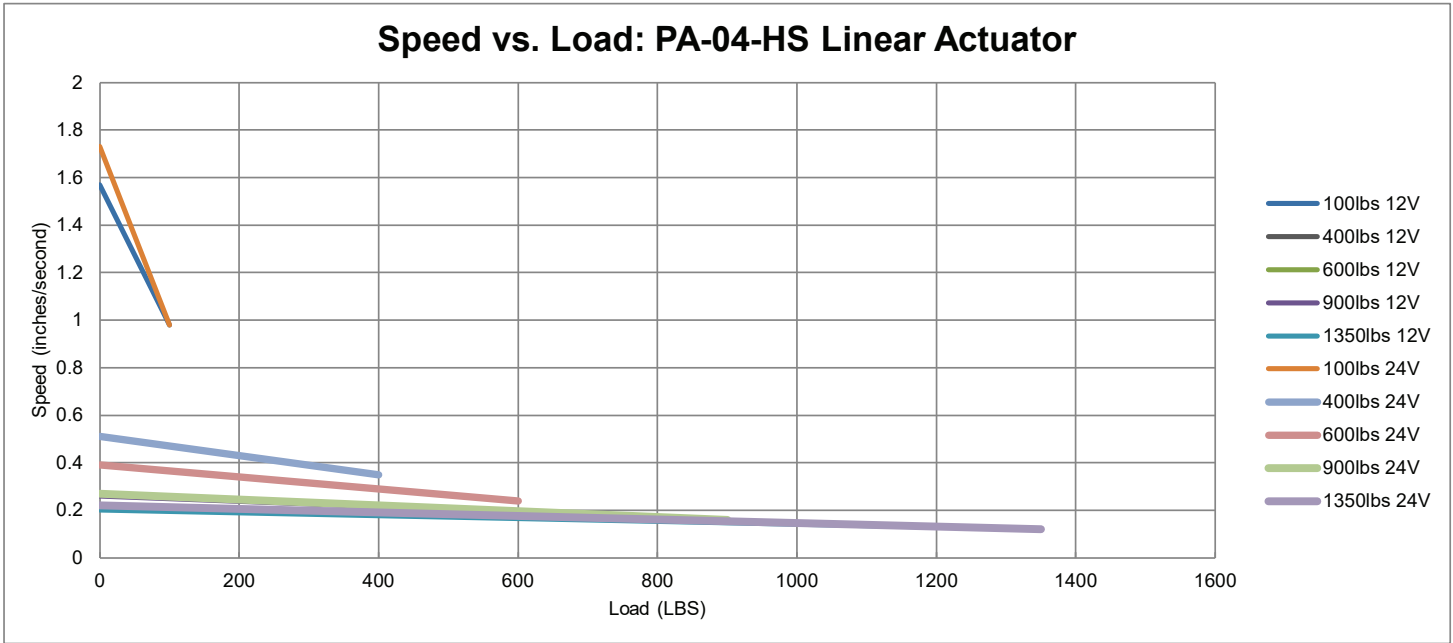
progressiveautomations.com

Specifications

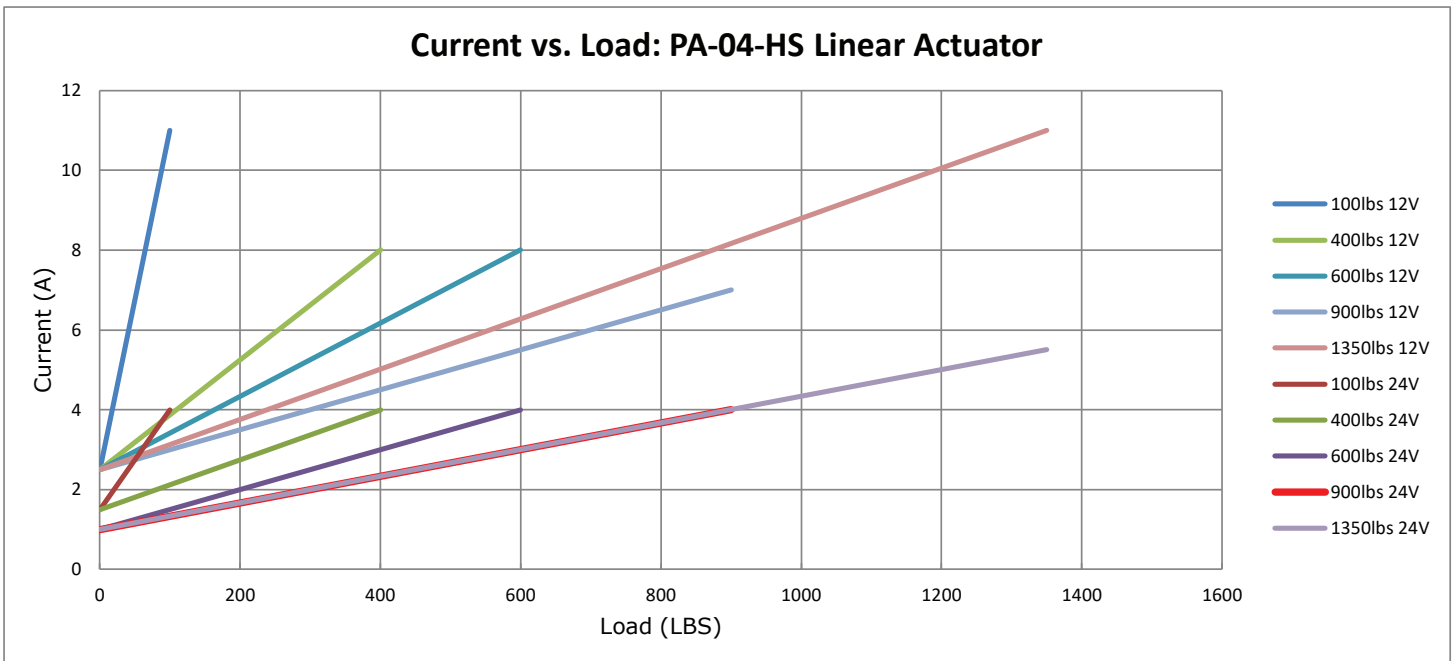
Load (LBS)		No Load Current (A)		Full Load Current (A)		Speed (inch/sec)	
Dynamic	Static	12 VDC	24 VDC	12 VDC	24 VDC	No Load	Full Load
100	100	2.5	1.5	11.0	4.0	1.57	0.98
400	400	2.5	1.5	8.0	4.0	0.52	0.35
600	600	2.5	1.0	8.0	4.0	0.39	0.24
900	900	2.5	1.0	7.0	4.0	0.28	0.16
1350	1350	2.5	1.0	11.0	5.5	0.20	0.16

Stroke	1" to 40"
Limit Switch	Internal - Non-Adjustable
Limit Switch Feedback	Available in 24VDC Only
Screw Type	ACME Screw
Motor Type	Brushed DC Motor
Connector Type	See Page 6
Wire Length	40" (customizable)
Housing Material	Aluminum Alloy
Rod Material	Aluminum Alloy
Gear Material	Polyformaldehyde
Color (Shaft)	Silver
Color (Motor End)	Black
Noise	<45dB
Duty Cycle	20% (4 minutes on, 16 minutes off)
Operational Temperature	-25°C to 65°C (-13°F to 149°F)
Protection Class	IP66
Feedback Options	Hall Effect or Limit Switch Feedback (see page 6)
Certifications	CE/RoHS, UL (customizable)
Mounting Brackets	See Page 8
Mounting Ends	See Page 7

Speed vs Load



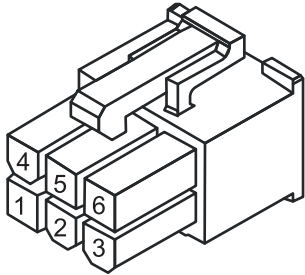
Current vs Load



Connectors & Feedback

6-Pin Hall Effect Connector

*For Stroke Lengths 6" to 40"



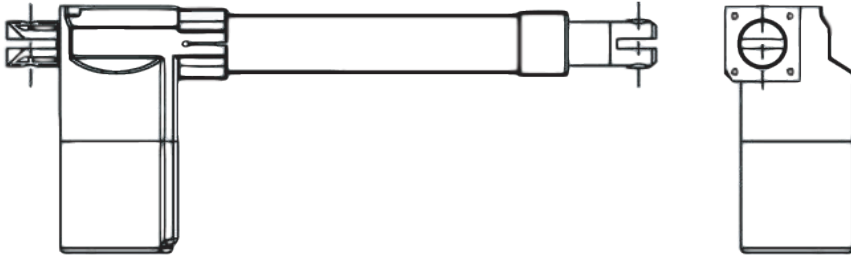
Motor		Hall Sensor			
4	5	2	3	1	6
M+ (Extend)	M- (Retract)	GND	+5VDC	Signal 2 Leads when Extending	Signal 1 Leads when Retracting

Component	Part Name	Part Number	Mating Part Number
Housing	Molex Mini Fit Jr 6-Pin Receptacle	39-01-2065	39-01-2069 39-01-2066

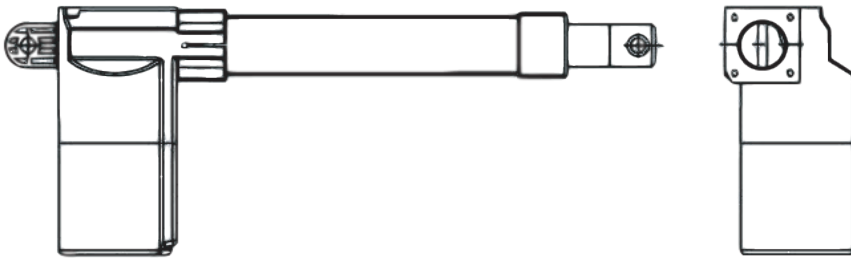
Output Signal Extending		Output Signal Retracting	
Hall Effect 1 Signal		Hall Effect 1 Signal	
Hall Effect 2 Signal		Hall Effect 2 Signal	

Mounting Ends

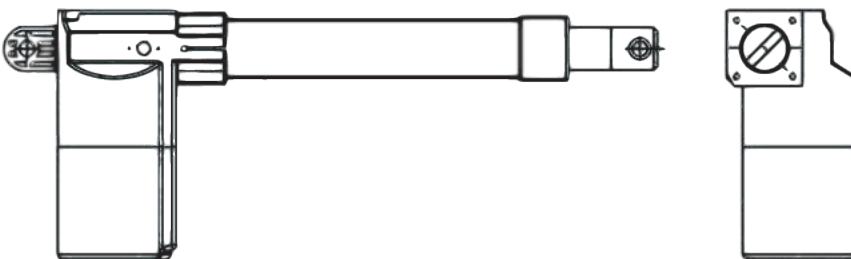
H-Type Clevis (Standard)



V-Type Clevis



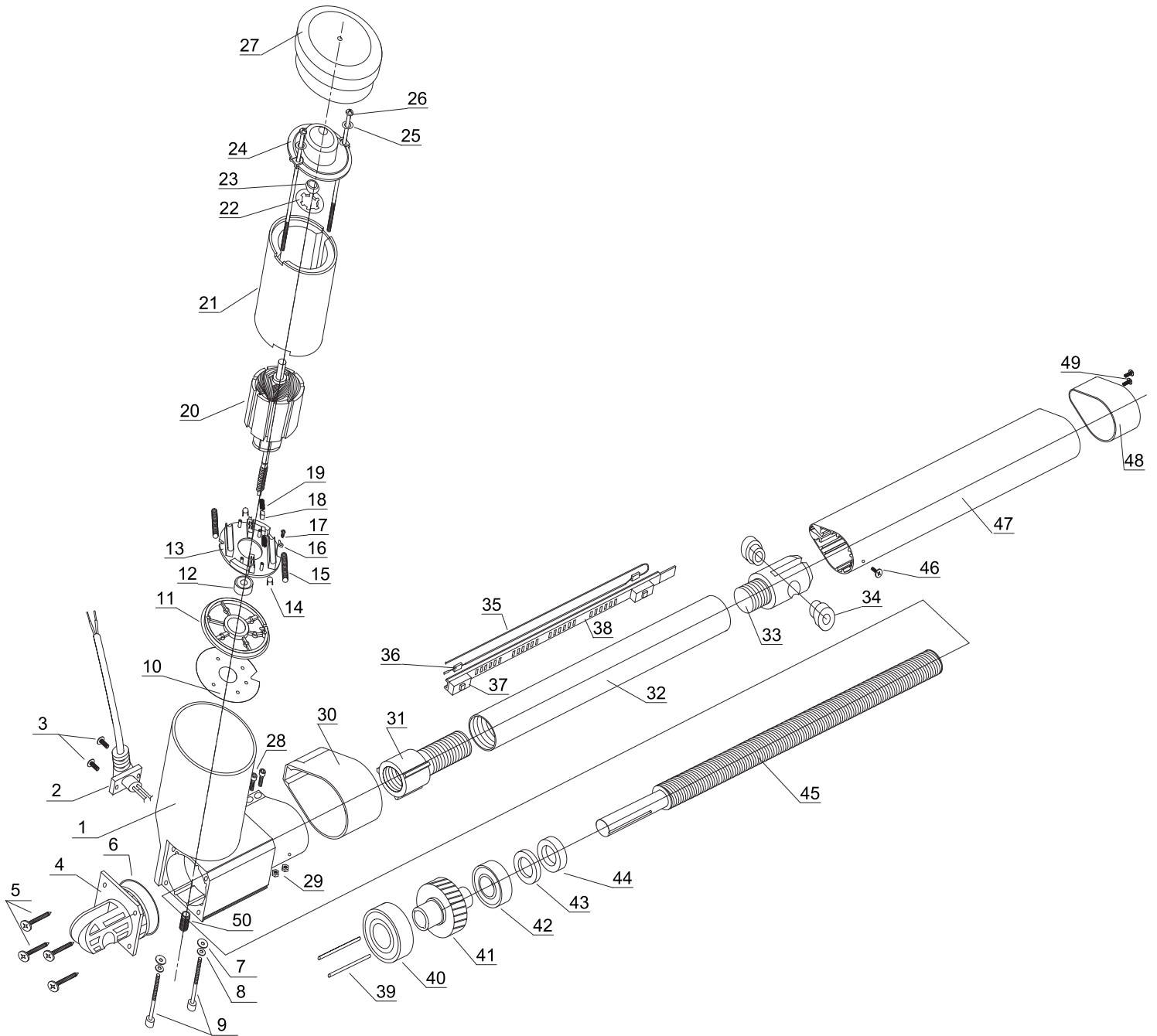
45 Degree Type Clevis 1



45 Degree Type Clevis 2



Internal Components



Internal Descriptions

Item	Description	Qty
1	Actuator Enclosure	1
2	Power Cable With Mounting	1
3	Power Cable Screw	2
4	Case Mounting Bracket	1
5	Mounting Bracket Screw	4
6	Mounting Bracket O-Ring	1
7	Motor Unit Screw Washer	2
8	Motor Unit Screw Spring Washer	2
9	Motor Unit Screw	2
10	Motor Case Gasket	1
11	Motor Base	1
12	Motor Lower Bearing	1
13	Brush Holder PCB	1
14	Capacitor	2
15	Inductor	2
16	Cable Lock	1
17	Cable Lock Screw	1
18	Electric Motor Brush	2
19	Brush Spring	2
20	Electric Motor Rotor	1
21	Electric Motor Enclosure With Stator	1
22	Top Bearing Holder	1
23	Top Bearing	1
24	Motor Top Enclosure	1
25	Motor Screw Washer	2
26	Motor Screw	2
27	Actuator Top Cap	1
28	Shaft Enclosure Side Screw	2
29	Shaft Enclosure Side Screw Nut	2
30	Shaft Enclosure Protector	1
31	Bottom Shaft Guide	1
32	Shaft	1
33	Shaft Mounting Top	1
34	Mounting Hole Guard	2
35	Wire	1
36	Diode	2
37	Limit Switch	2
38	Limit Switch Base	1
39	Drive Gear Wheel Pin	2
40	Shaft Drive Bottom Bearing	1
41	Drive Gear Wheel	1
42	Shaft Drive Bearing	1
43	Shaft Drive Small Spacer	1
44	Shaft Drive Spacer	1
45	Threaded Shaft Drive	1
46	Shaft Enclosure Screw	1
47	Shaft Enclosure	1
48	Shaft Enclosure Top Cap	1
49	Shaft Enclosure Top Cap Screw	1
50	Rotor Control Screw	1